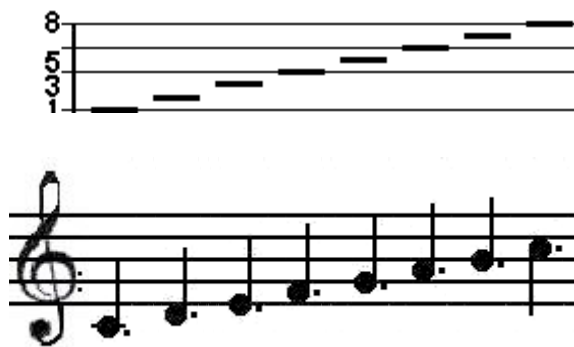


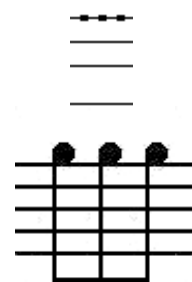
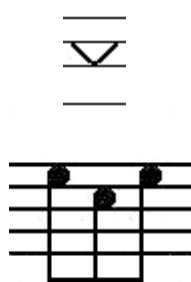
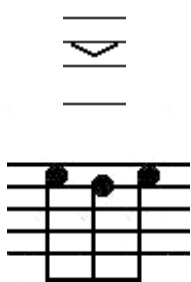
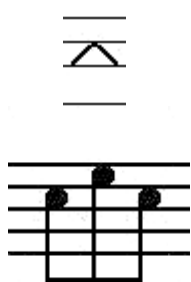
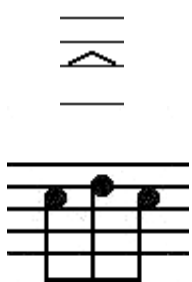
Estensione:
Es.Do +



↓
Crài sònanti*
(Tonica)

↓
Crài sònanti*
(Tonica)

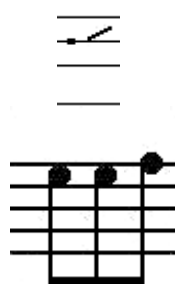
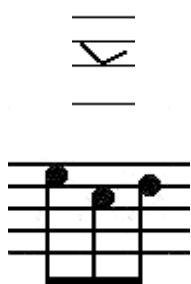
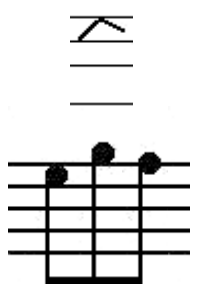
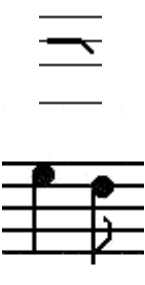
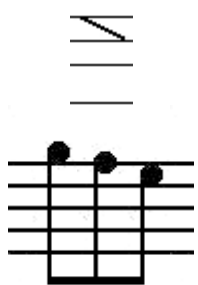
↓
Crài sònanti*
(Tonica)

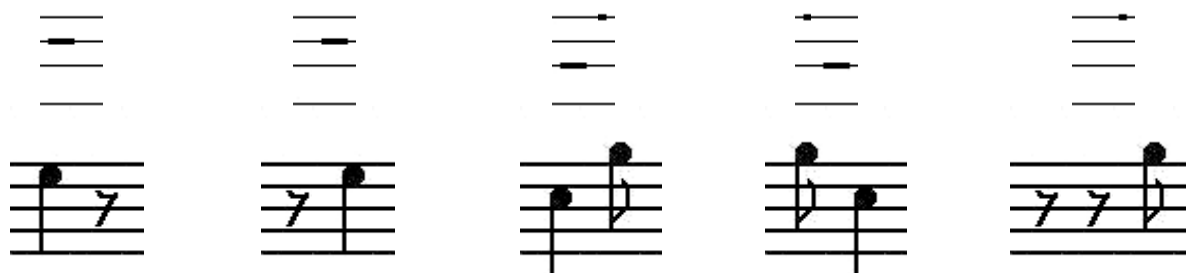
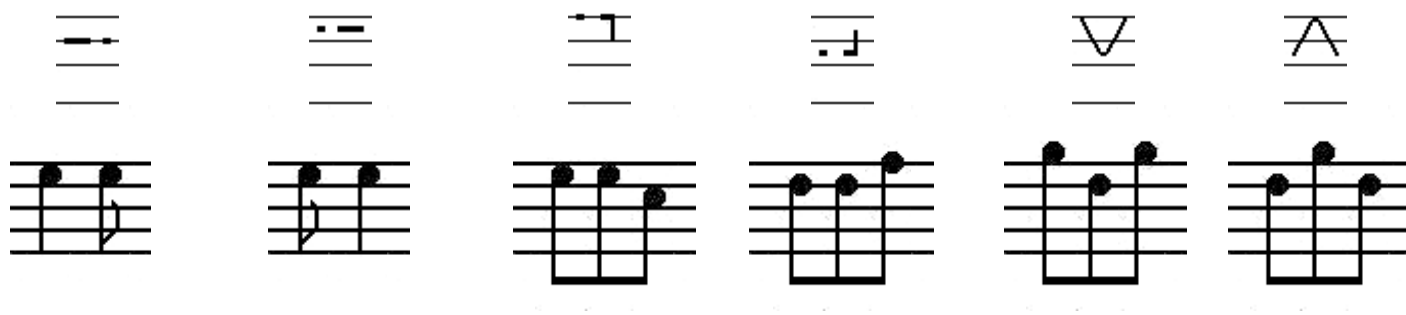


*Arrapìccu a crài de susu:

*Arrapìccu a crài de asùta:

(*Bentzon L1° p.64)





La “*stenografia*” può rendersi utile per annotare in modo veloce il “canto” delle nodas (in 6/8).

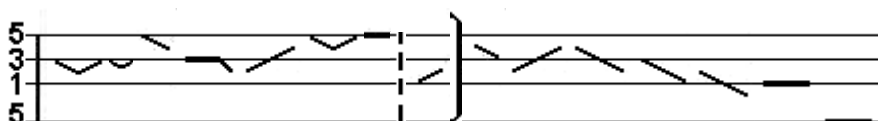
Esempio noda a Mediana Pipia (manoscritta)

3 · (- - - ∨ -) ^ \ ^ -

Esempio noda a Punt’e organu 01



Esempio noda Punt’e organu 02 (fisa)



Esempio di appunti su "stenografia"

P. MADAV
 BULL ORISTANESU

1. A b A Ab

2. C D CD

3. E E

4.

5. F F

6.

7.

8. G

9.